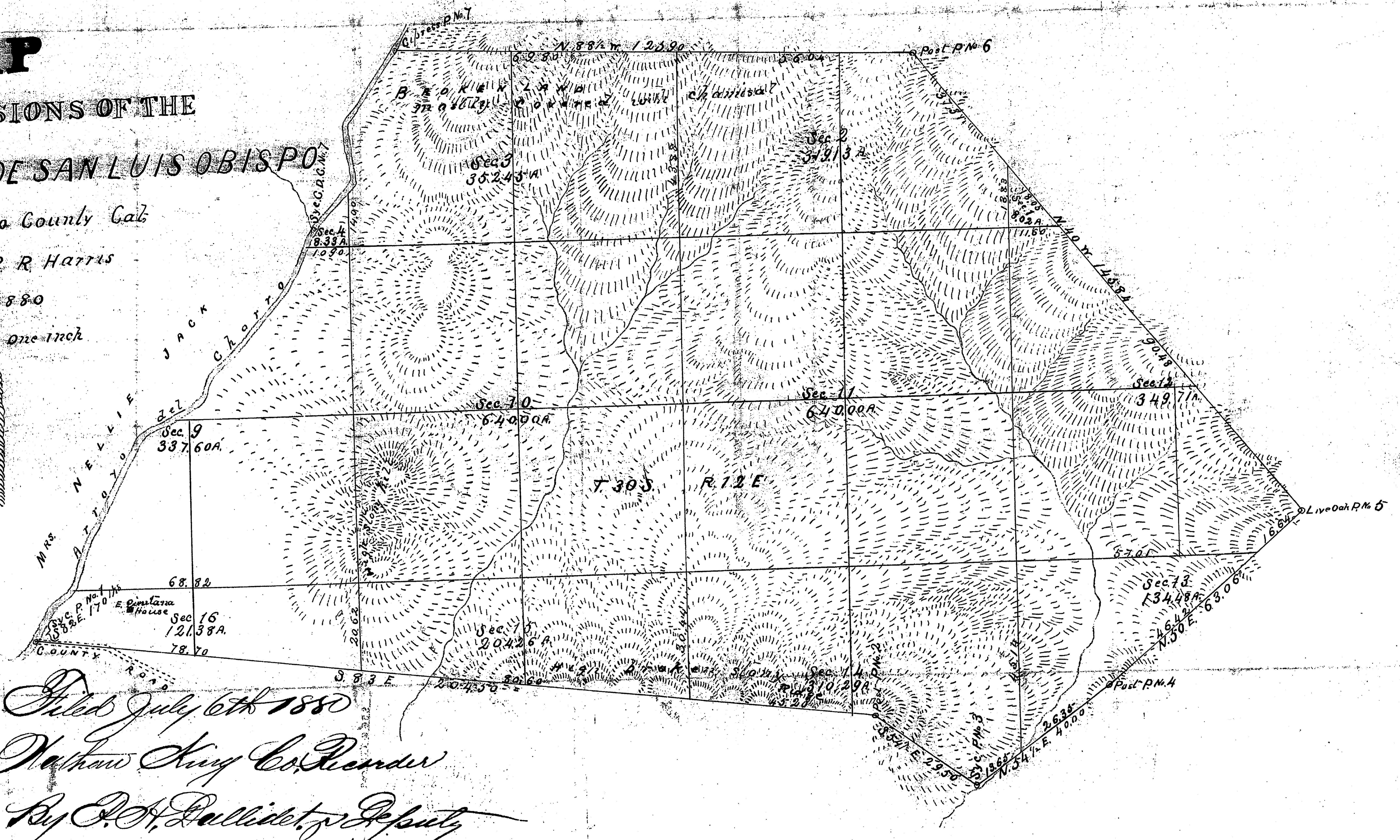


MAP

OF THE SUBDIVISIONS OF THE RANCHO POTRERO DE SAN LUIS OBISPO

San Luis Obispo County Cal
Made by R. R. Harris
May 1880
Scale 20 chains = one inch



Filed July 6th 1880
Nathan King Co. Recorder
By C. H. Dullidat, Deputy