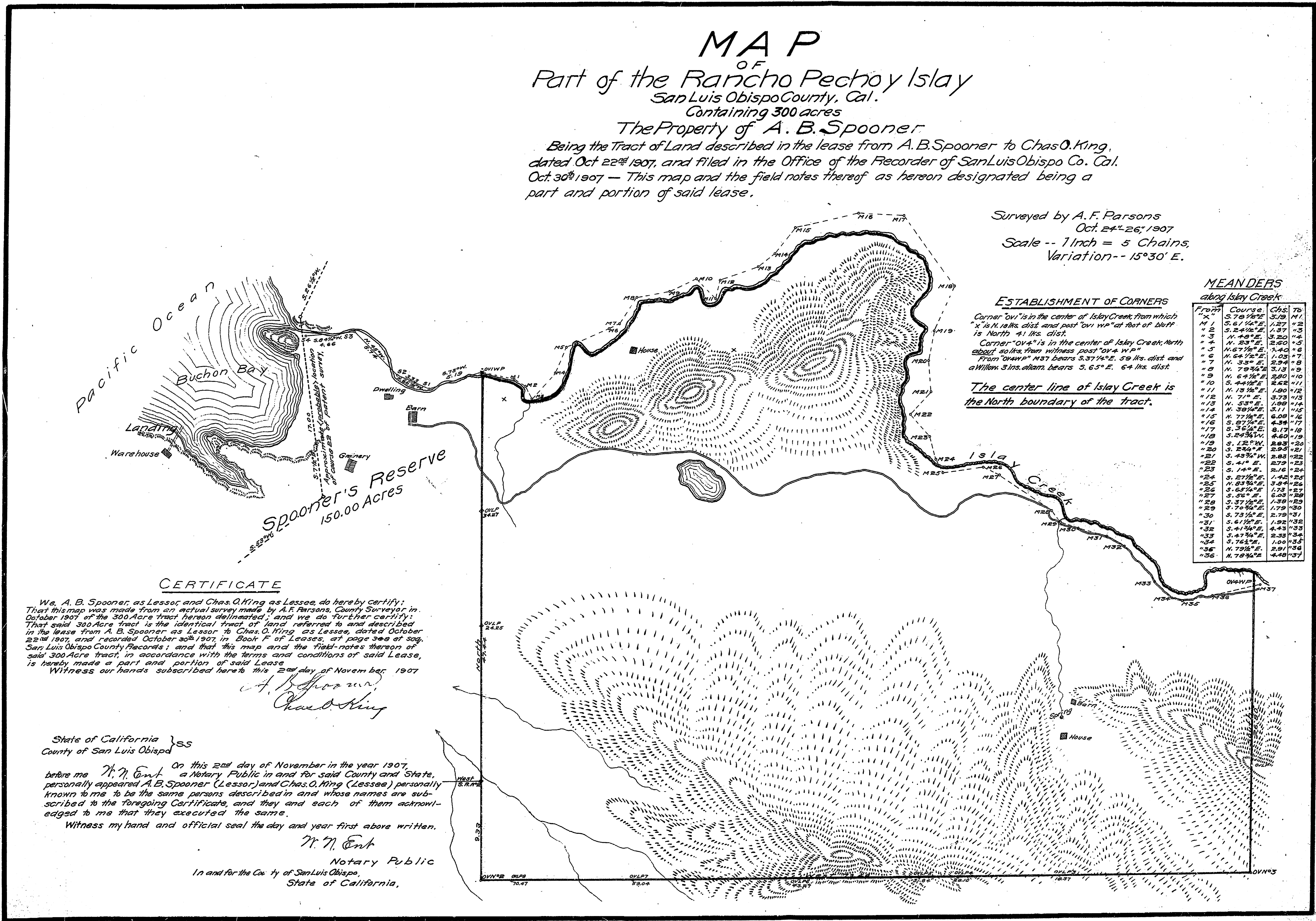


MAP
 OF
 Part of the Rancho Pecho y Islay
 San Luis Obispo County, Cal.
 Containing 300 acres
 The Property of A. B. Spooner
 Being the Tract of Land described in the lease from A. B. Spooner to Chas. O. King,
 dated Oct 22nd 1907, and filed in the Office of the Recorder of San Luis Obispo Co. Cal.
 Oct. 30th 1907 - This map and the field notes thereof as hereon designated being a
 part and portion of said lease.

Surveyed by A. F. Parsons
 Oct. 24th-26th, 1907
 Scale -- 1 Inch = 5 Chains,
 Variation -- 15° 30' E.



MEANDERS
 along Islay Creek

From	Course	Chs	Rs
X	S. 70 1/2° E.	3.19	M1
M1	S. 61 1/2° E.	1.27	M2
M2	S. 24 1/2° E.	1.37	M3
M3	N. 43° E.	3.20	M4
M4	N. 23° E.	2.60	M5
M5	N. 57 1/2° E.	3.40	M6
M6	N. 64 1/2° E.	1.03	M7
M7	N. 33° E.	2.94	M8
M8	N. 70 1/2° E.	3.13	M9
M9	N. 69 1/2° E.	2.80	M10
M10	S. 44 1/2° E.	2.42	M11
M11	N. 13 1/2° E.	1.80	M12
M12	N. 71° E.	3.73	M13
M13	N. 53° E.	1.99	M14
M14	N. 38 1/2° E.	3.11	M15
M15	N. 27 1/2° E.	6.08	M16
M16	S. 57 1/2° E.	4.38	M17
M17	S. 36 1/2° E.	8.17	M18
M18	S. 24 1/2° E.	4.60	M19
M19	S. 12° W.	2.83	M20
M20	S. 28 1/2° E.	2.93	M21
M21	S. 43 1/2° W.	2.61	M22
M22	S. 41° E.	2.73	M23
M23	S. 14° E.	2.16	M24
M24	S. 27 1/2° E.	1.42	M25
M25	N. 83 1/2° E.	3.84	M26
M26	S. 63 1/2° E.	1.73	M27
M27	S. 31° E.	6.09	M28
M28	S. 37 1/2° E.	1.39	M29
M29	S. 73 1/2° E.	1.79	M30
M30	S. 73 1/2° E.	2.79	M31
M31	S. 61 1/2° E.	1.92	M32
M32	S. 44 1/2° E.	4.43	M33
M33	S. 47 1/2° E.	2.33	M34
M34	S. 76 1/2° E.	1.00	M35
M35	N. 79 1/2° E.	2.91	M36
M36	N. 70 1/2° E.	4.48	M37

ESTABLISHMENT OF CORNERS
 Corner "ov1" is in the center of Islay Creek from which
 "x" is N. 10 lks. dist. and post "ov1 w" at foot of bluff
 is North 4 1/2 lks. dist.
 Corner "ov4" is in the center of Islay Creek, North
 about 20 lks. from witness post "ov4 w"
 From "ov4 w" M37 bears S. 37 1/2° E. 5 1/2 lks. dist. and
 a Willow 3 ins. diam. bears S. 65° E. 6 1/2 lks. dist.
 The center line of Islay Creek is
 the North boundary of the tract.

CERTIFICATE

We, A. B. Spooner, as Lessor, and Chas. O. King as Lessee, do hereby certify:
 That this map was made from an actual survey made by A. F. Parsons, County Surveyor in
 October 1907 of the 300 Acre tract hereon delineated, and we do further certify:
 That said 300 Acre tract is the identical tract of land referred to and described
 in the lease from A. B. Spooner as Lessor to Chas. O. King as Lessee, dated October
 22nd 1907, and recorded October 30th 1907 in Book F of Leases, at page 308 of said
 San Luis Obispo County Records; and that this map and the field notes thereon of
 said 300 Acre tract, in accordance with the terms and conditions of said Lease,
 is hereby made a part and portion of said Lease.
 Witness our hands subscribed here to this 2nd day of November, 1907

A. B. Spooner
Chas. O. King

State of California } ss
 County of San Luis Obispo }
 before me *W. N. Ent* a Notary Public in and for said County and State,
 personally appeared *A. B. Spooner* (Lessor) and *Chas. O. King* (Lessee) personally
 known to me to be the same persons described in and whose names are sub-
 scribed to the foregoing Certificate, and they and each of them acknowl-
 edged to me that they executed the same.
 Witness my hand and official seal the day and year first above written.
W. N. Ent
 Notary Public
 In and for the County of San Luis Obispo,
 State of California.

A. F. Parsons
 License & Surveyor

FILED AT REQUEST of C. O. King, NOVEMBER 4th 1907.
D. M. Mahoney RECORDER.