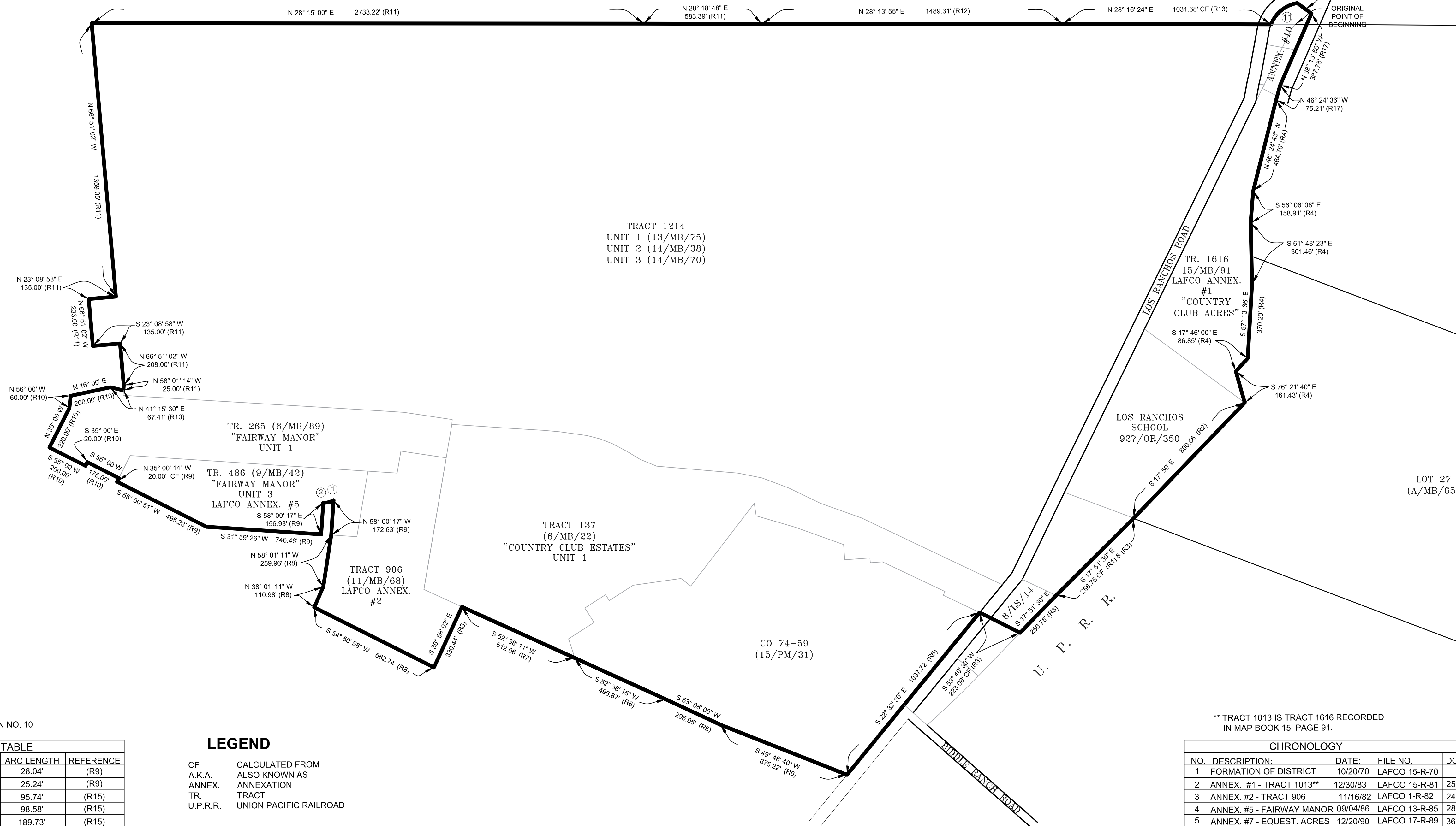
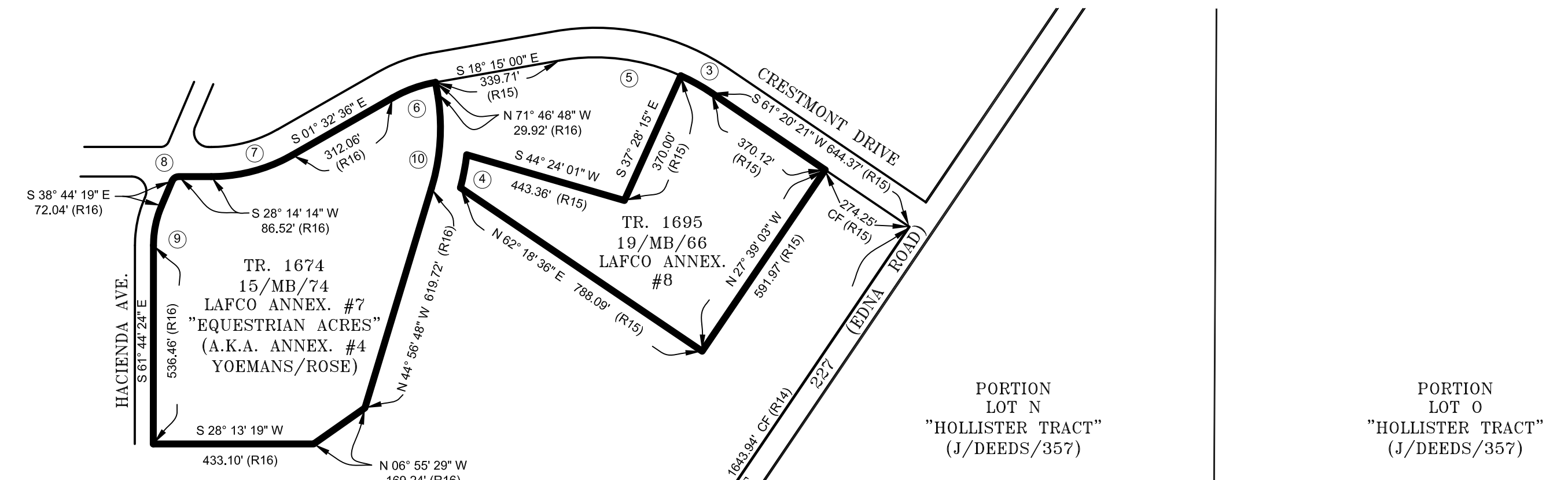


VICINITY MAP



REFERENCES

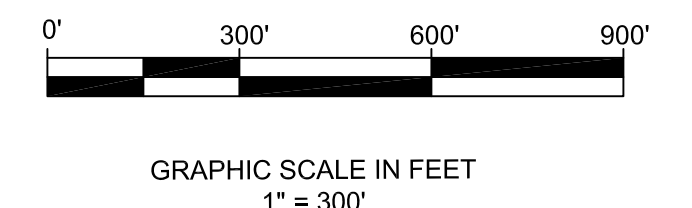
- (R1) 13/LS/49
- (R2) 927/OR/350
- (R3) 8/LS/14
- (R4) 15/MB/91
- (R5) 7/PM/99
- (R6) 15/PM/31
- (R7) 6/MB/22
- (R8) 11/MB/68
- (R9) 9/MB/42
- (R10) 6/MB/22
- (R11) 14/MB/70
- (R12) 37/PM/72
- (R13) 44/LS/30
- (R14) 06/MB/58
- (R15) 19/MB/66
- (R16) 15/MB/74
- (R17) 2010039122 - ANNEXATION NO. 10

LEGEND

- CF CALCULATED FROM
- A.K.A. ALSO KNOWN AS
- ANNEX. ANNEXATION
- TR. TRACT
- U.P.R.R. UNION PACIFIC RAILROAD

CURVE DATA TABLE

NO.	RADIUS	CENTRAL ANGLE	ARC LENGTH	REFERENCE
①	85.00'	18° 53' 52"	28.04'	(R9)
②	85.00'	17° 00' 53"	25.24'	(R9)
③	559.18'	09° 38' 47"	95.74'	(R15)
④	630.00'	08° 14' 16"	98.58'	(R15)
⑤	559.18'	19° 26' 25"	189.73'	(R15)
⑥	360.00'	19° 46' 20"	124.23'	(R16)
⑦	440.00'	29° 46' 18"	228.63'	(R16)
⑧	20.00'	66° 58' 33"	23.38'	(R16)
⑨	275.00'	22° 59' 49"	110.38'	(R16)
⑩	555.00'	26° 50' 00"	259.92'	(R16)
⑪	170.00'	59° 39' 09"	175.03'	CF (R18)



** TRACT 1013 IS TRACT 1616 RECORDED IN MAP BOOK 15, PAGE 91.

CHRONOLOGY				
NO.	DESCRIPTION:	DATE:	FILE NO.	DOCUMENT NO.
1	FORMATION OF DISTRICT	10/20/70	LAFCO 15-R-70	
2	ANNEX. #1 - TRACT 1013**	12/30/83	LAFCO 15-R-81	2554/OR/119
3	ANNEX. #2 - TRACT 906	11/16/82	LAFCO 1-R-82	2446/OR/466
4	ANNEX. #5 - FAIRWAY MANOR	09/04/86	LAFCO 13-R-85	2880/OR/282
5	ANNEX. #7 - EQUEST. ACRES	12/20/90	LAFCO 17-R-89	3624/OR/259
6	ANNEX. #8 - TRACT 1695	04/04/97	LAFCO 3-R-97	1997-044563
7	ANNEXATION #9	06/11/03	LAFCO 5-R-02	2003-063261
8	ANNEXATION #10	06/11/03	LAFCO 2-R-10	2010-039122
9	CONVERT MAP TO CAD	07/2011	N/A	N/A
10				
11				

**COUNTY OF SAN LUIS OBISPO
PUBLIC WORKS DEPARTMENT**

**COUNTY SERVICE AREA NO. 18
(C.S.A. 18)
SAN LUIS OBISPO COUNTY, CALIFORNIA**

DRAWN BY:	DATE:	APPROVED BY:	DATE:	SCALE:	SHEET
KSS	JULY 2011	D. RION	JUNE 2012	1" = 300'	1 OF 1